



From: Commander, NYS Military Emergency Boat Service

Subj: OPSUM 26 MAY 2023 MEBS PROGRAM

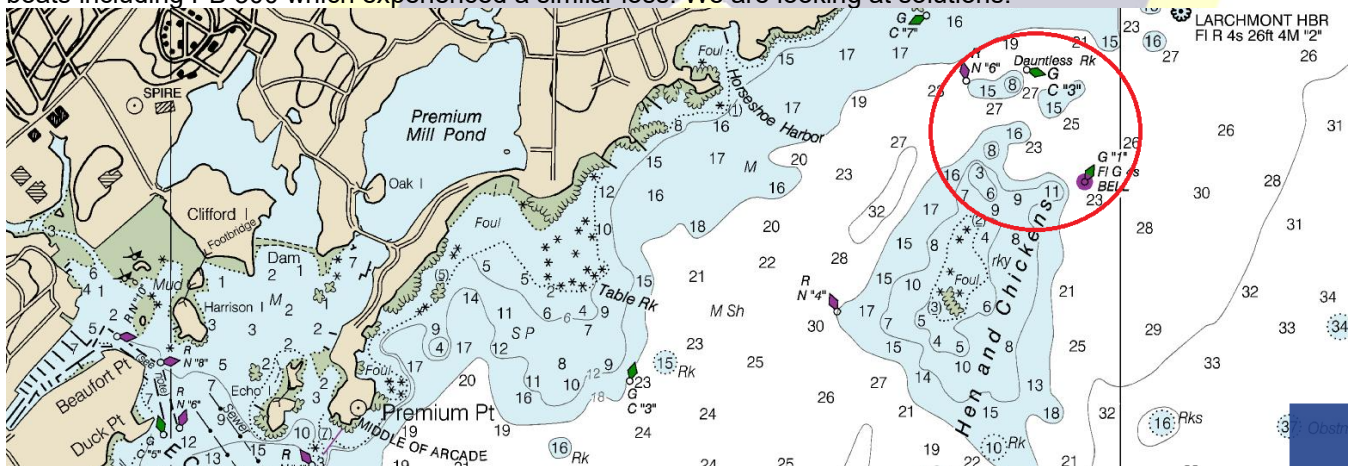
The link to the MEBS LOG APP is <https://www.jotform.com/app/build/222037196822152>

The following is the status of the New York State Military Emergency Boat Service

1) ADMINISTRATION:

a. For those members seeking to get toll pass credit on their EZ PASS account, we have added a function in the MEBS LOG to complete the form and get it signed by higher authority. Once signed, the document will be emailed back to the service member. Find the **ATTESTATION OF OFFICIAL DUTY** button on the bottom of the first page of MEBS LOG. We have tested this function and it appears to work. However, we know we may get a few glitches. It is still worth checking out, so that you can get credit for your MTA and Thruway tolls.

b. PB 230 suffered a grounding during a proficiency training event on the afternoon of 19MAY. After a full day of training on Long Island Sound, the vessel was returning to New Rochelle when it hit near Dauntless Rock off Larchmont Harbor. The conditions were high wind and spray and four-foot seas, creating limited visibility. In addition, we had a charging failure on the tablet that held the electronic navigation chart. This issue with the tablets not holding charges and not being able to charge while in the boat is being noticed on several boats including PB 300 which experienced a similar loss. We are looking at solutions.



With regard to the grounding, all proper preparations and reports for the training event were conducted, including a GAR risk assessment. When the grounding happened, the crew immediately conducted a damage assessment and found that the boat is seaworthy. It made it back to port. Damage included scrapes of bottom paint and damage to the starboard engine skeg and cavitation plate. Surprisingly, the prop was not affected. The boat was repaired on 23MAY, by replacing the damaged lower end with one from PB 220. As a result, that boat is now NMC, while PB 230 is FMC. The lower end has already been delivered to FPS Props in Ravena for repairs.

c. For planning purposes, we anticipate that the MEBS Kick-Off Weekend in 2024 will take place 30-31 MAR 24. This is a full month earlier than normal. However, we anticipate some early April 2024 activity that we need to be prepared for.

d. Upcoming events: (new events **highlighted**)

- i. 31MAY23: LChamplain AMSC
- ii. **13JUN23: MERC Trailer Loading Demo (Phase 2); Rensselaer**
- iii. 22 JUN23: Operation Aegis; LErie/Bufalo
- iv. 23-25 JUN 23: NY Air Show; Orange County Airport, Montgomery
- v. 8 JUL 23: NYNM Day at NRC Schenectady
- vi. 20-21JUL23: WESTCOM Multi-Day/Operation Commanding Force: Alexandria Bay
- vii. 4-6AUG: Exercise Western Horizon '23; Sodus Point/Oswego/Rochester
- viii. 11 AUG 23. NYNM Leadership Meeting, Latham



- ix. 19-20 AUG 23: JTF 2 CPX; Camp Smith
- x. 28-29 AUG 23: Operation Aegis; LChamplain/Plattsburgh
- xi. Week of 6-8 SEP23: Operation Aegis; Hudson River
- xii. 3-5OCT23: Exercise Empire Challenge '23; Brooklyn
- xiii. 11OCT23: State Canal System closes
- xiv. 28-29OCT23: Fall Round-up; Leeds
- xv. 30-31MAR24: MEBS Kick-Off Weekend 2024

2) INFORMATION: (*Times-Union*) General Electric on Tuesday said they planned to hire 200 people to work at a new \$50 million onshore wind turbine assembly line at the company's downtown plant. The union jobs will include operators and engineers who will work on GE Vernova's 6.1-megawatt turbine. The massive conglomerate is breaking itself up into three separate companies focusing on aviation, health care and power generation. GE Vernova is one of the company's three spinoffs. Tuesday's news is the latest indication that what had been a long decline in jobs in Schenectady, which for decades was GE's historic home base, is reversing as the company looks to solidify its leadership in the emerging green energy business. GE Vernova is also looking to build turbine blades and nacelles, or turbine units, for offshore wind, near the Port of Coeymans along the Hudson River south of Albany. Schenectady's new onshore assembly line will go into GE's existing building where other turbines are built. It should be up and running by the fall.

3) OPERATIONS:

a. Readiness Rating:

MEBS Readiness Rating		Minimum Standard	Actual	Rating	Goal
Personnel Census	P-Rating	90	79	2	120 MEBS Members
Personnel Staff	S-Rating	7	9	1	9 Key Staff
Training Qualifications	Q-Rating	30	31	1	45 Qualified Coxswains
Training Proficiency	T1-Rating	118	85	2	240 Proficiency Mandays (2/member/year)
Additional Training	T2-Rating	90%	100.67%	1	Basic Course, Towing Cert., UECO, and +
Communications Reliability	K-Rating	90%	94.89%	1	100% Functionality
Equipment Maintenance	E-Rating	90%	95.65%	1	100% Operational
Equipment Vehicle Quantity	V-Rating	11	9	2	11 Trucks

Overall Readiness R-RATING

1.38 **2**

Date:

26-May-23

b. JTFES Naval Det activity for the past week:

- i. DET 1 Indian Point Activity: Federal Safety and Security Zone Patrol/Lower Hudson River Patrol.
- ii. DET 2 Staten Island Activity: Support to USCG Sector NY.

4) LOGISTICS:



- a. All
 b. SFY 2023-24 Expenditures to date:

Cost Area	Cost
General	\$839.37
Boat Maintenance	\$3,557.74
Truck Maintenance	\$127.71
Trailer Maintenance	\$48.00
Travel/Per Diem	\$10,417.96
Boat Gasoline	\$7,167.90
Truck Diesel	\$1,197.71
Major Acquisition	\$245,094.88
Grants Reimbursement	\$0.00
Total	\$268,451.27
Available:	

- c. Boat, Truck and Trailer Status / Locations:

NEW YORK NAVAL MILITIA/MILITARY EMERGENCY BOAT SERVICE (MEBS)					
Prepared By: CAPT McKnight, (518) 786-6021					
Report Valid As Of: 20230526					
<u>Bow / Bumper #</u>	<u>Boat / Vehicle</u>	<u>Location</u>	<u>Status</u>	<u>Mission</u>	<u>Comments</u>
PB 220	Patrol Boat	Leeds	NMC	Training	Lower end replacement
PB 221	Patrol Boat	Waterford	FMC	Training	Ready
PB 230	Patrol Boat	New Rochelle	FMC	Training	Ready, in water.
PB 280	Patrol Boat	Rochester	FMC	Training	Ready, in water.
PB 281	Patrol Boat	Buffalo	FMC	Training	Ready
PB 300	Patrol Boat	Tottenville	FMC	Training	Ready, in water.
PB 301	Patrol Boat	Verplanck	FMC	JTFES DET 1	Ready, in water.
LC 350	Landing Craft	Jones Beach	FMC	Training	Ready, in water.
LC 351	Landing Craft	Coxsackie	FMC	Training	Ready, in water.
PB 400	Patrol Boat	Verplanck	FMC	JTFES DET 1	Ready, in water.
PB 440	Patrol Boat	Staten Island	FMC	JTFES DET 2	Ready, in water.
F350-5274	Prime Mover	Leeds	FMC	N/A	Ready
F350-5275	Prime Mover	Jones Beach	FMC	N/A	Ready
F350-5327	Prime Mover	Leeds	FMC	N/A	Ready
F350-5329	Prime Mover	Leeds	FMC	N/A	Ready



F350-5339	Prime Mover	Latham	FMC	N/A	Ready
F350-5340	Prime Mover	Latham	FMC	N/A	Ready
F350-5619	Prime Mover	Leeds	FMC	N/A	Ready
F550-5008	Prime Mover	Rochester	FMC	Maintenance vehicle	Ready
F550-5009	Prime Mover	Buffalo	FMC	N/A	Ready
CT 8901	Cargo Trailer	Staten Island	FMC	NA	Ready
CP 8902	C2 Trailer	Leeds	FMC	N/A	Ready
MT 8903	Maint Trailer	Leeds	FMC	NA	Ready

5) PLANNING AND EXERCISES.

6) COMMUNICATIONS. We have placed an order for a new NVIS antenna for HF communications. This new antenna will take significantly less real estate to set up, and will not require the antenna to be hung from trees, light poles, etc.

7) TRAINING.

a. Past Week:

- i. 19MAY23: DET 21, New Rochelle
- ii. 22MAY23: DET 12, Jones Beach
- iii. 24MAY23: DET 11, Tottenville

b. Upcoming:

- i. 26MAY23: DET 33 proficiency training, Waterford
- ii. 2JUN23: DET 12 proficiency training, Jones Beach
- iii. 13JUN23: DET 22 MERC Trailer Loading Demo, Rensselaer